

Courtesy Of Ryan B Debler Of Sotheby's International Realty Canada

\$6,090,945 - 902 10143 Clifton Place, Edmonton

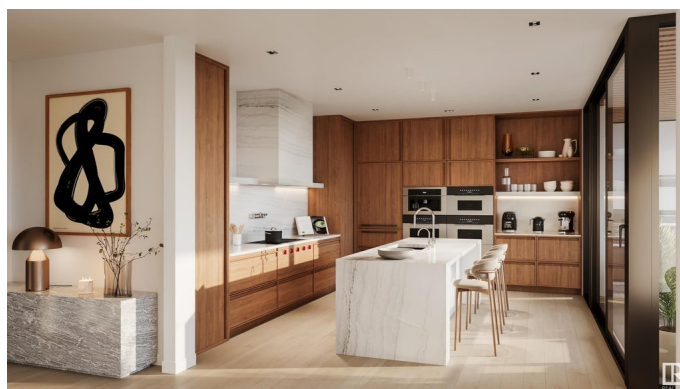
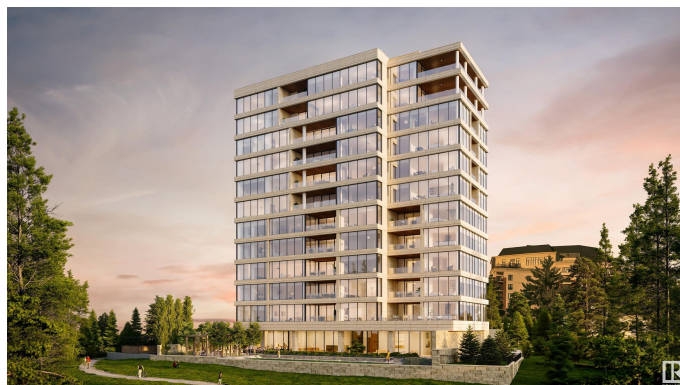
MLS® #E4419693

\$6,090,945

3 Bedroom, 3.50 Bathroom, 3,461 sqft
Condo / Townhouse on 0.00 Acres

Westmount, Edmonton, AB

Perfectly set between elegant Old Glenora and High Street, The Clifton promises the very best our city has to offer. Imagined by Autograph and designed by McKinley, The Clifton provides 12 floors of expansive estates, rich interiors, and spectacular panoramic views. A symbol of exceptional design and extraordinary living through its craft, timeless architecture and landmark location. The statuesque modern silhouette is home to a small community of estates featuring unobstructed views of the River Valley. With a purposely designed street-facing facade, discreet entrance, and private concierge service, The Clifton offers seclusion and intimacy second to none. Estate comprises of nearly 3500sqft of the finest craftsmanship. This three bedroom residence commands 2/3 of the 9th floor and offers unobstructed views through its floor to ceiling windows. Owners are presented with the opportunity to put their custom stamp on their residence by selecting their interior finishings. Welcome Home. Photos virtually staged.



Built in 2024

Essential Information

MLS® #	E4419693
Price	\$6,090,945

Bedrooms	3
Bathrooms	3.50
Full Baths	3
Half Baths	1
Square Footage	3,461
Acres	0.00
Year Built	2024
Type	Condo / Townhouse
Sub-Type	Apartment High Rise
Style	Single Level Apartment
Status	Active

Community Information

Address	902 10143 Clifton Place
Area	Edmonton
Subdivision	Westmount
City	Edmonton
County	ALBERTA
Province	AB
Postal Code	T5H 0E7

Amenities

Amenities	Air Conditioner, Barbecue-Built-In, Closet Organizers, Deck, Exercise Room, Guest Suite, Party Room, Patio, Secured Parking, Security Door, Social Rooms, Concierge Service, Storage Cage
Parking Spaces	3
Parking	Heated, Parkade, Underground

Interior

Interior Features	ensuite bathroom
Appliances	Air Conditioning-Central, Dishwasher-Built-In, Dryer, Hood Fan, Oven-Microwave, Refrigerator, Stove-Gas, Washer, Window Coverings, Wine/Beverage Cooler, See Remarks
Heating	Heat Pump, Natural Gas
# of Stories	12
Stories	1
Has Basement	Yes
Basement	None, No Basement

Exterior

Exterior	Concrete, Stone, See Remarks
Exterior Features	Backs Onto Park/Trees, Cul-De-Sac, Hillside, No Through Road, Private Setting, Ravine View, River Valley View, River View, Shopping Nearby, View City, View Downtown, See Remarks
Roof	EPDM Membrane
Construction	Concrete, Stone, See Remarks
Foundation	Concrete Perimeter

Additional Information

Date Listed	January 30th, 2025
Days on Market	43
Zoning	Zone 07
Condo Fee	\$2,769

DATA IS DEEMED RELIABLE BUT IS NOT GUARANTEED ACCURATE BY THE REALTORS® ASSOCIATION OF EDMONTON. COPYRIGHT 2025 BY THE REALTORS® ASSOCIATION OF EDMONTON. ALL RIGHTS RESERVED. Trademarks are owned or controlled by the Canadian Real Estate Association (CREA) and identify real estate professionals who are members of CREA (REALTOR®, REALTORS®) and/or the quality of services they provide (MLS®, Multiple Listing Service®)

Listing information last updated on March 14th, 2025 at 5:02pm MDT