

\$899,000 - 27 Rosewood Way, St. Albert

MLS® #E4433716

\$899,000

2 Bedroom, 2.00 Bathroom, 1,733 sqft

Single Family on 0.00 Acres

Riverside (St. Albert), St. Albert, AB

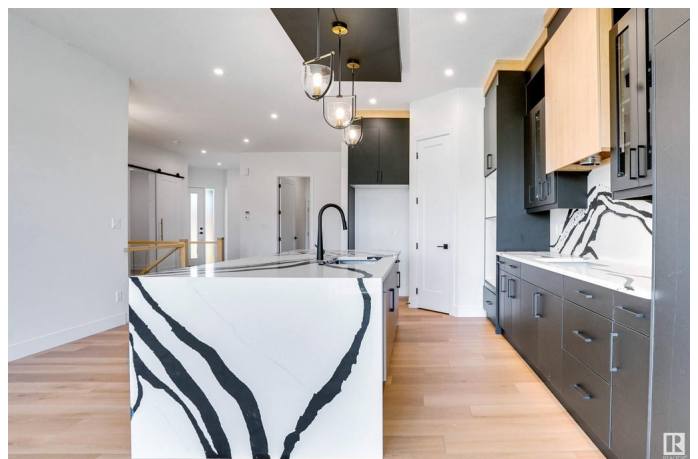
WALKOUT BUNGALOW ON POND....TRIPLE CAR GARAGE...Ready to Move. North facing Walkout Bungalow with lot of sun and privacy in the back. 46 wide lot with huge backyard. Open floor plan with 10 feet high ceiling on the main floor and 9 feet high in the basement. Custom Built with Premium Finishes and quality work. Heated Floor in Master En-suite. Master Ensuite with free standing soaker tub and custom shower. Huge Living room Fireplace with Porcelain slabs. Custom Cabinets with glass doors and pantry. Premium counter tops with waterfall and quartz backsplash. Open dining area with 8 Feet high patio door to walkout deck with pond view. 36 feet wide deck has access from dinning nook and master bedroom. Deck will be finished with vinyl floor and metal railings. Custom cabinets in walk in closets. Rooms are beautifully finished with Feature walls and wall panels. Main floor laundry. Additional bedroom with closet. Front facing den with wainscoting. Unfinished walkout basement for future development. DON'T MISS.

Built in 2025

Essential Information

MLS® # E4433716

Price \$899,000



Bedrooms	2
Bathrooms	2.00
Full Baths	2
Square Footage	1,733
Acres	0.00
Year Built	2025
Type	Single Family
Sub-Type	Detached Single Family
Style	Bungalow
Status	Active

Community Information

Address	27 Rosewood Way
Area	St. Albert
Subdivision	Riverside (St. Albert)
City	St. Albert
County	ALBERTA
Province	AB
Postal Code	T8N 7Y8

Amenities

Amenities	Ceiling 10 ft., Deck, Walkout Basement
Parking Spaces	6
Parking	Triple Garage Attached
Is Waterfront	Yes

Interior

Interior Features	ensuite bathroom
Appliances	Garage Opener, Hood Fan
Heating	Forced Air-1, Natural Gas
Fireplaces	Mantel
Stories	1
Has Basement	Yes
Basement	Full, Unfinished

Exterior

Exterior	Wood, Stone, Vinyl
Exterior Features	Backs Onto Lake, Fruit Trees/Shrubs, Park/Reserve, Playground Nearby, Shopping Nearby, See Remarks

Roof	Asphalt Shingles
Construction	Wood, Stone, Vinyl
Foundation	Concrete Perimeter

Additional Information

Date Listed	May 1st, 2025
Days on Market	79
Zoning	Zone 24

DATA IS DEEMED RELIABLE BUT IS NOT GUARANTEED ACCURATE BY THE REALTORS® ASSOCIATION OF EDMONTON. COPYRIGHT 2025 BY THE REALTORS® ASSOCIATION OF EDMONTON. ALL RIGHTS RESERVED.Trademarks are owned or controlled by the Canadian Real Estate Association (CREA) and identify real estate professionals who are members of CREA (REALTOR®, REALTORS®) and/or the quality of services they provide (MLS®, Multiple Listing Service®)

Listing information last updated on July 18th, 2025 at 10:32pm MDT