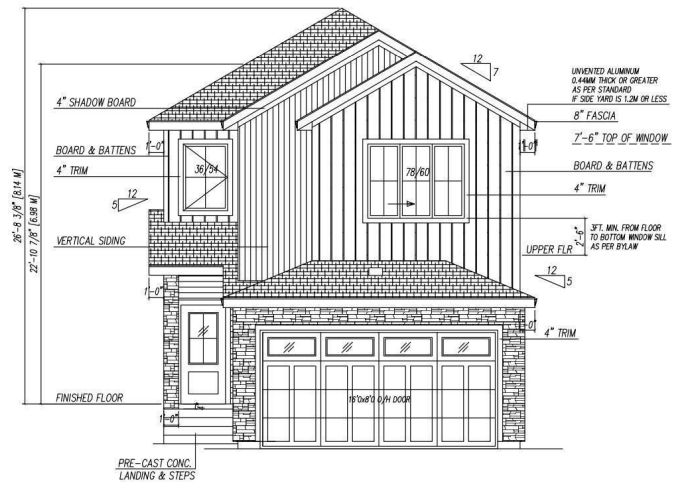


\$554,900 - 26 Norwyck Way, Spruce Grove

\$554,900

Fenwyck, Spruce Grove, AB

Welcome to this beautifully upgraded home in the heart of Spruce Grove! This spacious and modern property features an open-to-below concept with high ceilings and premium finishes throughout. The main floor offers full bedroom and full bathroom, perfect for guests. Upstairs, youâ€™ll find master bedroom with 5pc ensuite another 2 perfect sized bedrooms, full 4 pc bath, a large bonus room, and plenty of natural light. Enjoy the added value of a SEPERATE SIDE ENTRANCE to basement, ideal for future development or rental potential. ALL APPLIANCES and WINDOW BLINDS are also included, making this a truly move-in ready home. Located close to schools, parks, shopping, and other amenities â€“ this is the perfect place to call home.



Built in 2025

Essential Information

| | |
|----------------|-----------|
| MLS® # | E4443132 |
| Price | \$554,900 |
| Bedrooms | 4 |
| Bathrooms | 3.00 |
| Full Baths | 3 |
| Square Footage | 1,900 |
| Acres | 0.00 |
| Year Built | 2025 |

| | |
|----------|------------------------|
| Type | Single Family |
| Sub-Type | Detached Single Family |
| Style | 2 Storey |
| Status | Active |

Community Information

| | |
|-------------|----------------|
| Address | 26 Norwyck Way |
| Area | Spruce Grove |
| Subdivision | Fenwyck |
| City | Spruce Grove |
| County | ALBERTA |
| Province | AB |
| Postal Code | T7X 1Y1 |

Amenities

| | |
|-----------|---------------------------------|
| Amenities | Ceiling 9 ft., Closet Organizer |
| Parking | Double Garage Attached |

Interior

| | |
|-------------------|---|
| Interior Features | ensuite bathroom |
| Appliances | Dishwasher-Built-In, Dryer, Stove-Gas, Washer |
| Heating | Forced Air-1, Natural Gas |
| Fireplace | Yes |
| Fireplaces | Tile Surround |
| Stories | 2 |
| Has Basement | Yes |
| Basement | Full, Unfinished |

Exterior

| | |
|-------------------|---|
| Exterior | Wood, Vinyl |
| Exterior Features | Playground Nearby, Schools, Shopping Nearby |
| Roof | Asphalt Shingles |
| Construction | Wood, Vinyl |
| Foundation | Concrete Perimeter |

Additional Information

| | |
|----------------|-----------------|
| Date Listed | June 19th, 2025 |
| Days on Market | 11 |



Zoning

Zone 91



DATA IS DEEMED RELIABLE BUT IS NOT GUARANTEED ACCURATE BY THE REALTORS® ASSOCIATION OF EDMONTON. COPYRIGHT 2025 BY THE REALTORS® ASSOCIATION OF EDMONTON. ALL RIGHTS RESERVED. Trademarks are owned or controlled by the Canadian Real Estate Association (CREA) and identify real estate professionals who are members of CREA (REALTOR®, REALTORS®) and/or the quality of services they provide (MLS®, Multiple Listing Service®)

Listing information last updated on June 30th, 2025 at 9:02am MDT