

## \$499,900 - 1520 80a Street, Edmonton

MLS® #E4445520

**\$499,900**

4 Bedroom, 3.00 Bathroom, 1,551 sqft

Single Family on 0.00 Acres

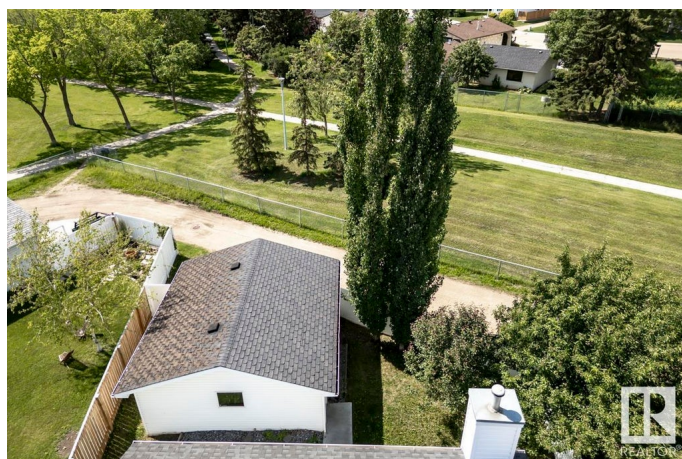
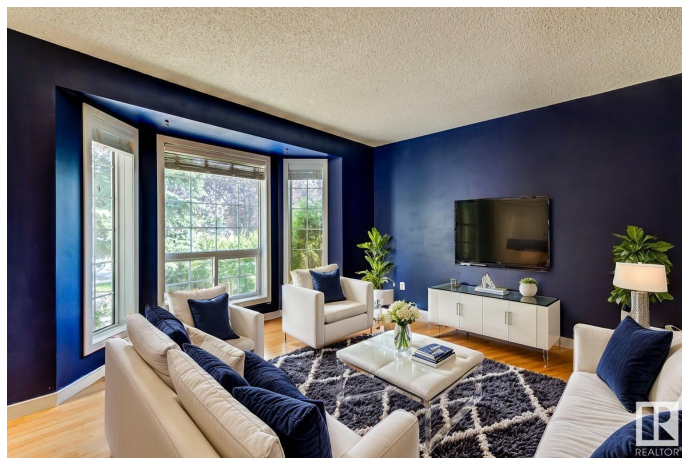
Satoo, Edmonton, AB

Finallyâ€”space to grow into, not out of. This updated 5-level split offers 2,000+ sq ft of finished living space with 4 bedrooms, 3 full baths, and room for real life. A sunlit living room with bay windows flows into a formal dining area, and the crisp kitchen shines with subway tile and stainless steel finishes. The lower family room features a fireplace and walkout to a sunny southwest-facing backyardâ€”no rear neighbours, just fruit trees, new fencing, and greenspace. Downstairs, a private guest bedroom, new bath, bonus living space, and huge crawlspace offer flexibility and storage youâ€™™ll actually use. Add a newer furnace, AC, and oversized double garageâ€”and youâ€™™ve got the total package. Quiet street, steps to parks and trails. This one just feels right.

Built in 1993

### Essential Information

MLS® #	E4445520
Price	\$499,900
Bedrooms	4
Bathrooms	3.00
Full Baths	3
Square Footage	1,551
Acres	0.00
Year Built	1993



Type	Single Family
Sub-Type	Detached Single Family
Style	5 Level Split
Status	Active

### Community Information

Address	1520 80a Street
Area	Edmonton
Subdivision	Satoo
City	Edmonton
County	ALBERTA
Province	AB
Postal Code	T6K 4E2

### Amenities

Amenities	Air Conditioner, Closet Organizers, Crawl Space, Deck, Exterior Walls-2"x6", Smart/Program. Thermostat, Vinyl Windows
Parking Spaces	4
Parking	Double Garage Detached

### Interior

Interior Features	ensuite bathroom
Appliances	Air Conditioning-Central, Dishwasher-Built-In, Dryer, Microwave Hood Fan, Refrigerator, Stove-Electric, Vacuum Systems, Washer, Window Coverings
Heating	Forced Air-1, Natural Gas
Fireplace	Yes
Fireplaces	Stone Facing
Stories	4
Has Basement	Yes
Basement	Full, Finished

### Exterior

Exterior	Wood, Vinyl
Exterior Features	Backs Onto Park/Trees, Fenced, Fruit Trees/Shrubs, Golf Nearby, Landscaped, Level Land, Low Maintenance Landscape, Picnic Area, Playground Nearby, Public Transportation, Schools, Shopping Nearby
Roof	Asphalt Shingles
Construction	Wood, Vinyl
Foundation	Concrete Perimeter

**Additional Information**

Date Listed                July 3rd, 2025  
Days on Market        26  
Zoning                    Zone 29

DATA IS DEEMED RELIABLE BUT IS NOT GUARANTEED ACCURATE BY THE REALTORS® ASSOCIATION OF EDMONTON. COPYRIGHT 2025 BY THE REALTORS® ASSOCIATION OF EDMONTON. ALL RIGHTS RESERVED.Trademarks are owned or controlled by the Canadian Real Estate Association (CREA) and identify real estate professionals who are members of CREA (REALTOR®, REALTORS®) and/or the quality of services they provide (MLS®, Multiple Listing Service®)  
Listing information last updated on July 29th, 2025 at 1:02am MDT