

Courtesy Of Ricky D Hill Of RE/MAX Elite

\$328,000 - 114 465 Hemingway Road, Edmonton

MLS® #E4446667

\$328,000

2 Bedroom, 2.50 Bathroom, 1,121 sqft

Condo / Townhouse on 0.00 Acres

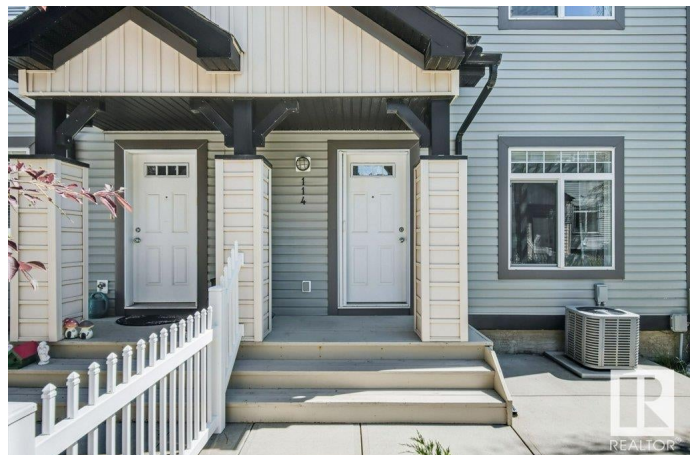
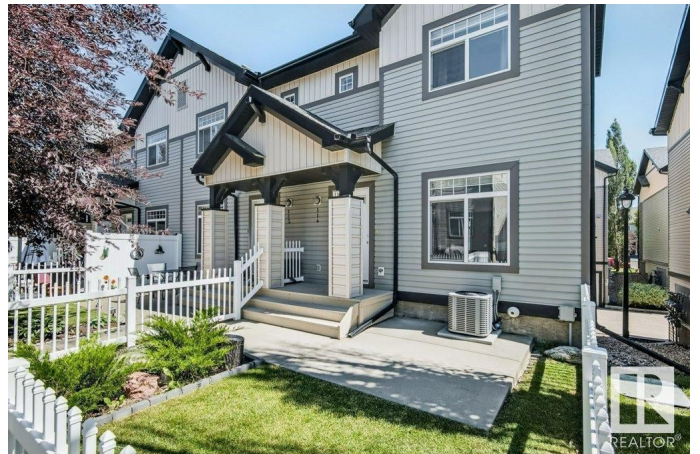
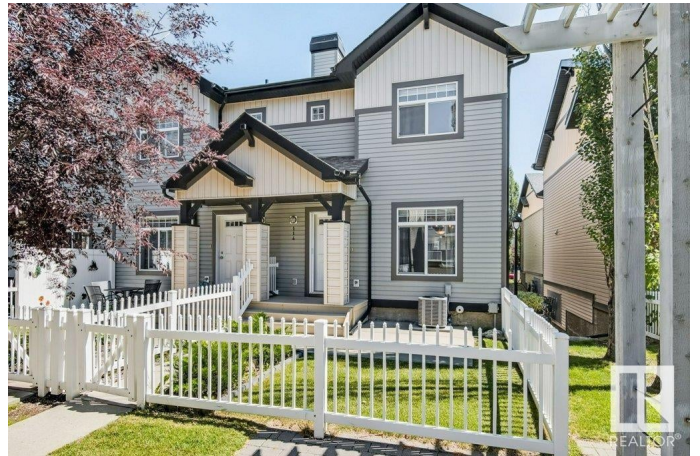
The Hamptons, Edmonton, AB

Incredible AIR CONDITIONED END UNIT Townhome at Convenient Mosaic Meadows in the Hamptons! SUNNY EAST/WEST Orientation! Just Move into this Well Maintained Unit with DUAL MASTER BEDROOMS on Upper Level with Media/Tech Center Bonus Room. The Open Concept Main Floorplan is Functional and Easy to Furnish with a Natural Flow for Everyday Living! Tons of Cabinet and Countertop Space in the Island Kitchen - with Full Pantry and Breakfast Nook Area. The Living/Dining Spaces are Generous and the Large Front Window Allows for Plenty of Sunlight! Tasteful Finishes Throughout - with LOTS OF PERSONALITY! Basement with Additional Storage and Double Attached Garage! Proactive and Well Managed Condo Board and Low Condo Fees make this one a WINNER! Close to EVERYTHING - Shopping, Schools, Parks and Access anywhere in Edmonton with the Anthony Henday Freeway! Immediate Possession Available!

Built in 2009

Essential Information

MLS® #	E4446667
Price	\$328,000
Bedrooms	2
Bathrooms	2.50



Full Baths	2
Half Baths	1
Square Footage	1,121
Acres	0.00
Year Built	2009
Type	Condo / Townhouse
Sub-Type	Townhouse
Style	2 Storey
Status	Active

Community Information

Address	114 465 Hemingway Road
Area	Edmonton
Subdivision	The Hamptons
City	Edmonton
County	ALBERTA
Province	AB
Postal Code	T6M 0J7

Amenities

Amenities	Parking-Visitor
Parking	Double Garage Attached

Interior

Interior Features	ensuite bathroom
Appliances	Air Conditioning-Central, Dishwasher-Built-In, Dryer, Microwave Hood Fan, Refrigerator, Stove-Electric, Washer
Heating	Forced Air-1, Natural Gas
Stories	2
Has Basement	Yes
Basement	Full, Unfinished

Exterior

Exterior	Wood, Vinyl
Exterior Features	Fenced, Golf Nearby, Landscaped, Paved Lane, Playground Nearby, Public Transportation, Schools, Shopping Nearby
Roof	Asphalt Shingles
Construction	Wood, Vinyl
Foundation	Concrete Perimeter

School Information

Elementary	BESSIE NICHOLS
Middle	S. BRUCE SMITH
High	JASPER PLACE

Additional Information

Date Listed	July 8th, 2025
Days on Market	22
Zoning	Zone 58
Condo Fee	\$280

DATA IS DEEMED RELIABLE BUT IS NOT GUARANTEED ACCURATE BY THE REALTORS® ASSOCIATION OF EDMONTON. COPYRIGHT 2025 BY THE REALTORS® ASSOCIATION OF EDMONTON. ALL RIGHTS RESERVED.Trademarks are owned or controlled by the Canadian Real Estate Association (CREA) and identify real estate professionals who are members of CREA (REALTOR®, REALTORS®) and/or the quality of services they provide (MLS®, Multiple Listing Service®)

Listing information last updated on July 30th, 2025 at 7:47pm MDT