

Courtesy Of David Lofthaug Of Bode

\$599,000 - 1536 Grant Way, Edmonton

MLS® #E4446980

\$599,000

4 Bedroom, 3.00 Bathroom, 2,038 sqft

Single Family on 0.00 Acres

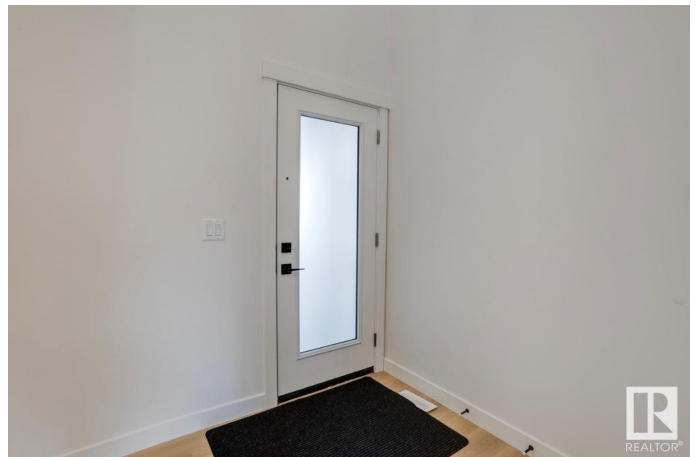
Glastonbury, Edmonton, AB

Welcome to this stunning Prairie Elevation home backing onto a walkway and peaceful greenspaceâ€”offering privacy and natural views. With a separate side entrance, this home is ideal for potential future development. The main floor features a versatile fourth bedroom and full bathroom, perfect for guests or extended family. A walk-through pantry connects the mud room to a chef-inspired kitchen with a substantial island and flush eating bar, all overlooking a generous dining nook designed for family gatherings. Upstairs, a central bonus room anchors three spacious bedrooms and a convenient second-floor laundry. The primary bedroom boasts a four-piece ensuite and a large walk-in closet for everyday luxury. The basement features 9' ceilings and oversized windows, ready for your personal touch. Thoughtfully designed for comfort, flexibility, and connectionâ€”this home has everything your family needs. Photos are representative.

Built in 2025

Essential Information

MLS® #	E4446980
Price	\$599,000
Bedrooms	4
Bathrooms	3.00



Full Baths	3
Square Footage	2,038
Acres	0.00
Year Built	2025
Type	Single Family
Sub-Type	Detached Single Family
Style	2 Storey
Status	Active

Community Information

Address	1536 Grant Way
Area	Edmonton
Subdivision	Glastonbury
City	Edmonton
County	ALBERTA
Province	AB
Postal Code	T5T 0W2

Amenities

Amenities	Closet Organizers, No Animal Home, No Smoking Home
Parking Spaces	4
Parking	Double Garage Attached

Interior

Interior Features	ensuite bathroom
Appliances	Hood Fan, Oven-Microwave
Heating	Forced Air-1, Natural Gas
Stories	2
Has Basement	Yes
Basement	Full, Unfinished

Exterior

Exterior	Wood, Vinyl
Exterior Features	Park/Reserve, Playground Nearby, Schools, Shopping Nearby
Roof	Asphalt Shingles
Construction	Wood, Vinyl
Foundation	Concrete Perimeter

Additional Information

Date Listed	July 10th, 2025
Days on Market	24
Zoning	Zone 58
HOA Fees	126
HOA Fees Freq.	Annually

DATA IS DEEMED RELIABLE BUT IS NOT GUARANTEED ACCURATE BY THE REALTORS® ASSOCIATION OF EDMONTON. COPYRIGHT 2025 BY THE REALTORS® ASSOCIATION OF EDMONTON. ALL RIGHTS RESERVED. Trademarks are owned or controlled by the Canadian Real Estate Association (CREA) and identify real estate professionals who are members of CREA (REALTOR®, REALTORS®) and/or the quality of services they provide (MLS®, Multiple Listing Service®)

Listing information last updated on August 3rd, 2025 at 2:17am MDT